



[BCIS Home](#) | [Log In](#) | [User Registration](#) | [Hot Topics](#) | [Submit Surcharge](#) | [Stats & Facts](#) | [Publications](#) | [Contact Us](#) | [BCIS Site Map](#) | [Links](#) | [Search](#)



**Product Approval**  
USER: Public User

[Product Approval Menu](#) > [Product or Application Search](#) > [Application List](#) > [Application Detail](#)

OFFICE OF THE SECRETARY

FL #	FL8200-R7								
Application Type	Revision								
Code Version	2017								
Application Status	Approved								
Comments									
Archived	<input type="checkbox"/>								
Product Manufacturer	American Shutter Systems Association, Inc.								
Address/Phone/Email	4268 Westroads Drive West Palm Beach, FL 33407 (561) 209-8263 bfeeley@easternmetal.com								
Authorized Signature	Bill Feeley Irodriguez@easternmetal.com								
Technical Representative									
Address/Phone/Email									
Quality Assurance Representative									
Address/Phone/Email									
Category	Shutters								
Subcategory	Colonial								
Compliance Method	Evaluation Report from a Florida Registered Architect or a Licensed Florida Professional Engineer <input type="checkbox"/> Evaluation Report - Hardcopy Received								
Florida Engineer or Architect Name who developed the Evaluation Report	Walter A. Tillit, Jr., P.E.								
Florida License	PE-44167								
Quality Assurance Entity	National Accreditation and Management Institute								
Quality Assurance Contract Expiration Date	12/31/2020								
Validated By	John Henry Kampmann Jr. <input checked="" type="checkbox"/> Validation Checklist - Hardcopy Received								
Certificate of Independence	<a href="#">FL8200_R7_COI_AMERICAN SHUTTER SYSTEMS ASSOC., INC. DRAWING 17-216 CERTIFICATE OF INDEPENDENCE.PDF</a>								
Referenced Standard and Year (of Standard)	<table border="0"> <thead> <tr> <th><u>Standard</u></th> <th><u>Year</u></th> </tr> </thead> <tbody> <tr> <td>ASTM E 1886-05</td> <td>2005</td> </tr> <tr> <td>ASTM E 1996-05</td> <td>2005</td> </tr> <tr> <td>ASTM E 330-02</td> <td>2002</td> </tr> </tbody> </table>	<u>Standard</u>	<u>Year</u>	ASTM E 1886-05	2005	ASTM E 1996-05	2005	ASTM E 330-02	2002
<u>Standard</u>	<u>Year</u>								
ASTM E 1886-05	2005								
ASTM E 1996-05	2005								
ASTM E 330-02	2002								
Equivalence of Product Standards Certified By									

Sections from the Code

Product Approval Method Method 1 Option D

Date Submitted 09/15/2017

Date Validated 10/13/2017

Date Pending FBC Approval 10/17/2017

Date Approved 12/12/2017

**Summary of Products**

FL #	Model, Number or Name	Description
8200.1	Bertha HV Colonial Shutter Drawing Number 17-216	Extruded aluminum blades assembled together and retained by jambs/headers to provide Hurricane Protection
<b>Limits of Use</b> <b>Approved for use in HVHZ:</b> No <b>Approved for use outside HVHZ:</b> Yes <b>Impact Resistant:</b> Yes <b>Design Pressure:</b> N/A <b>Other:</b> Large missile level "D", Wind Zones 1, 2 and 3, Max. width is 60" and Max. height is 96" for +45, -55 p.s.f. A.S.D. design load, and Max. width is 52" and Max. height is 66" for +50, -55 p.s.f. A.S.D. design load (double panels) and 105" maximum width and 66" maximum height for +45, -45 p.s.f. for concrete and +40, -45 p.s.f. for wood for quadruple panels.		<b>Installation Instructions</b> <a href="#">FL8200_R7_II_AMERICAN_SHUTTER_SYSTEMS_ASSOC., INC. DRAWG 17-216_BERTHA_HV_COLONIAL_SHUTTER.PDF</a> Verified By: American Test Lab of South Florida, Inc. Created by Independent Third Party: Yes <b>Evaluation Reports</b> <a href="#">FL8200_R7_AE_AMERICAN_SHUTTER_SYSTEMS_ASSOC., INC. DRAWING 17-216_PRODUCT_EVALUATION_REPORT.PDF</a> Created by Independent Third Party: Yes

[Back](#) [Next](#)

Contact Us :: [2601 Blair Stone Road, Tallahassee FL 32399](#) Phone: 850-487-1824

The State of Florida is an AA/EEO employer. [Copyright 2007-2013 State of Florida.](#) :: [Privacy Statement](#) :: [Accessibility Statement](#) :: [Refund Statement](#)

Under Florida law, email addresses are public records. If you do not want your e-mail address released in response to a public-records request, do not send electronic mail to this entity. Instead, contact the office by phone or by traditional mail. If you have any questions, please contact 850.487.1395. \*Pursuant to Section 455.275 (1), Florida Statutes, effective October 1, 2012, licensees licensed under Chapter 455, F.S. must provide the Department with an email address if they have one. The emails provided may be used for official communication with the licensee. However email addresses are public record. If you do not wish to supply a personal address, please provide the Department with an email address which can be made available to the public. To determine if you are a licensee under Chapter 455, F.S., please click [here](#).

Product Approval Accepts:



Credit Card  
**Safe**





**GENERAL NOTES:**

1. BERTHA H.V. COLONIAL SHUTTER SHOWN ON THIS PRODUCT EVALUATION DOCUMENT (P.E.D.) HAS BEEN VERIFIED FOR COMPLIANCE IN ACCORDANCE WITH THE 2017 (6th EDITION) OF THE FLORIDA BUILDING CODE. THIS COLONIAL SHUTTER SHALL NOT BE INSTALLED AT HIGH VELOCITY HURRICANE ZONES (MIAMI DADE/BROWARD COUNTY).  
DESIGN WIND LOADS SHALL BE DETERMINED AS PER SECTION 1609 OF THE ABOVE MENTIONED CODE. FOR A BASIC WIND SPEED AS REQUIRED BY THE JURISDICTION WHERE THESE SHUTTERS WILL BE INSTALLED MAXIMUM (A.S.D.) DESIGN PRESSURE RATINGS INDICATED ON NOTE 2.  
IN ORDER TO VERIFY THE ABOVE CONDITION, ULTIMATE DESIGN WIND LOADS DETERMINED PER ASCE 7-10 TO COMPARE THESE W/ MAX. (A.S.D.) DESIGN PRESSURE RATINGS INDICATED ON NOTE 2.  
IN ORDER TO VERIFY THAT ANCHORS ON THIS P.E.D., AS TESTED WERE NOT OVERSTRESSED, A 33% INCREASE IN ALLOWABLE STRESS FOR WIND LOADS WAS NOT USED IN THEIR ANALYSIS. HOWEVER, FOR CONNECTIONS INTO WOOD, A 1.60 WIND LOAD DURATION FACTOR WAS USED TO CALCULATE SCREWS SPACINGS.  
BERTHA H.V. COLONIAL SHUTTER'S ADEQUACY FOR IMPACT AND CYCLIC RESISTANCE HAS BEEN VERIFIED IN ACCORDANCE WITH SECTION 1609.1.2 OF THE ABOVE MENTIONED CODE AS PER ATL REPORTS # 1215.01-06 AND # 0131.01-07 WITH ADDENDUM, AS PER ASTM E 1886, ASTM E 1996 AND ASTM E 330 STANDARDS, QUALIFIED FOR WIND ZONES 1, 2 & 3 MISSILE TYPE D (BASIC PROTECTION).
2. SEE ELEVATIONS ON SHEETS 3, 3A, 4 & 9 FOR MAX. A.S.D. DESIGN PRESSURE RATING & MAX. SHUTTERS DIMENSIONS.
3. ALL ALUMINIUM EXTRUSIONS SHALL BE ALUMINIUM ASSOCIATION 6063-T6 ALLOY AND TEMPER, WITH Fy= 25.0 ksi MINIMUM (UNLESS OTHERWISE NOTED).
4. ALL SCREWS TO BE STAINLESS STEEL 304 OR 316 AISI SERIES WITH 50 ksi YIELD POINT AND 90 ksi TENSILE STRENGTH & SHALL COMPLY W/ FLORIDA BUILDING CODE SECTION 2411.3.3.4.
5. BOLTS TO BE AISI 304 SERIES STAINLESS STEEL WITH 35 ksi MINIMUM YIELD STRENGTH.
6. ALL ALUMINIUM POP RIVETS TO BE 5052 ALUMINIUM ALLOY WITH ALUMINIUM MANDREL.
7. ANCHORS TO WALL SHALL BE AS FOLLOWS: (UNLESS OTHERWISE NOTED)
  - (A) TO EXISTING WOOD FRAME WALL: SOUTHERN PINE No.2, G=0.55,  
- 1/4" Ø TAPCON ANCHORS AS MANUFACTURED BY I.T.W./BULDEX, INC.

- NOTES:
- B.1) MINIMUM EMBEDMENT OF TAPCON ANCHORS INTO THE POURED CONCRETE UNIT SHALL BE 1 3/4" AND IN CONCRETE BLOCK UNIT SHALL BE 1 1/4".
  - B.2) IN CASE THAT PRECAST STONE OR PRECAST CONCRETE PANELS BE FOUND ON THE EXISTING WALL, ANCHORS SHALL BE LONG ENOUGH TO REACH THE MAIN STRUCTURE BEHIND SUCH PANELS. ANCHORAGE SHALL BE AS INDICATED ON NOTES B.1).
  - (C) ANCHORS SHALL BE INSTALLED FOLLOWING ALL OF THE RECOMMENDATIONS AND SPECIFICATIONS OF THE ANCHOR'S MANUFACTURER.
  8. EACH SHUTTER SHALL HAVE A LEGIBLE AND READILY VISIBLE MARKING INSTRUCTING OWNER OR TENANT TO SECURE SHUTTER WITH STORM BARS & SAFETY PINS DURING PERIODS OF HURRICANE WARNINGS.
  9. IT SHALL BE THE RESPONSIBILITY OF THE CONTRACTOR TO VERIFY THE SOUNDNESS OF THE STRUCTURE WHERE SHUTTER IS TO BE ATTACHED TO INSURE PROPER ANCHORAGE. CONTRACTOR TO SEAL/CAULK ALL SHUTTER COMPONENT EDGES WHICH REMAIN IN CONTINUOUS CONTACT WITH THE BUILDING TO PREVENT WIND/RAIN INTRUSION.
  10. OWNER TO BE RESPONSIBLE FOR PROVIDING A SUITABLE PLATFORM OR BALCONY WHEN SECURING UNIT DURING HURRICANE WARNINGS.
  11. BERTHA H.V. COLONIAL SHUTTER'S INSTALLATION SHALL COMPLY WITH SPECS INDICATED IN THIS DRAWING PLUS ANY BUILDING AND ZONING REGULATIONS PROVIDED BY THE JURISDICTION WHERE PERMIT IS APPLIED TO.
  12. SHUTTER MANUFACTURER'S LABEL SHALL BE LOCATED ON A READILY VISIBLE LOCATION AT COLONIAL SHUTTER IN ACCORDANCE WITH SECTION 1709.9.3 OF FLORIDA BUILDING CODE. ONE LABEL SHALL BE PLACED FOR EVERY OPENING. LABELING TO COMPLY WITH SECTION 1709.9.2 OF THE FLORIDA BUILDING CODE.
  13. (A) THIS PRODUCT EVALUATION DOCUMENT (P.E.D.) PREPARED BY THIS ENGINEER IS GENERIC AND DOES NOT PROVIDE INFORMATION FOR A SITE SPECIFIC PROJECT; I. E. WHERE THE SITE CONDITIONS DEVIATE FROM THE P.E.D.
  - (B) CONTRACTOR TO BE RESPONSIBLE FOR THE SELECTION, PURCHASE AND INSTALLATION INCLUDING LIFE SAFETY OF THIS PRODUCT, BASED ON THIS PRODUCT EVALUATION DOCUMENT, PROVIDED HE/SHE DOES NOT DEVIATE FROM THE CONDITIONS DETAILED ON THIS DOCUMENT. CONSTRUCTION SAFETY AT SITE IS THE CONTRACTOR'S RESPONSIBILITY.
  - (C) THIS PRODUCT EVALUATION DOCUMENT WILL BE CONSIDERED INVALID IF ALTERED BY ANY MEANS.

(D) SITE SPECIFIC PROJECTS SHALL BE PREPARED BY A FLORIDA REGISTERED ENGINEER OR ARCHITECT WHICH WILL BECOME THE ENGINEER OF RECORD (E.O.R.) FOR THE PROJECT AND WHO WILL BE RESPONSIBLE FOR THE PROPER USE OF THE P.E.D. ENGINEER OF RECORD, ACTING AS A DELEGATED ENGINEER TO THE P.E.D. ENGINEER, SHALL SUBMIT TO THIS LATTER THE SITE SPECIFIC DRAWINGS FOR REVIEW.

FLORIDA BUILDING CODE (Non High Velocity Hurricane Zone)

ASSA / BERTHA H.V. COLONIAL SHUTTER

AMERICAN SHUTTER SYSTEMS ASSOC., INC.

THIS DRAWING SHALL ONLY BE USED TO OBTAIN PERMITS IN THE STATE OF FLORIDA



2017 TILTECO, INC.

**TILTECO INC.**

TILTEC TESTING & ENGINEERING COMPANY  
 4908 WEST BOUNDARY DRIVE  
 WEST PALM BEACH, FL 33411  
 PHONE: (561) 832-2204, FAX: (561) 209-8380

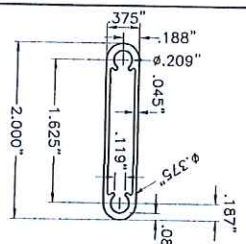
WALTER A. TULLIT JR., P.E.  
 FLORIDA LIC. # 44167

REV. NO.	DESCRIPTION	DATE	BY	CHK. BY
1		08/11/17		
2				
3				

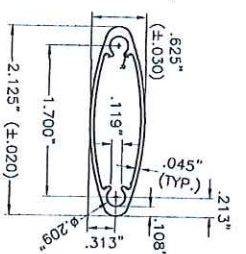
17-216  
DRAWING NO.

SHEET 1 OF 14

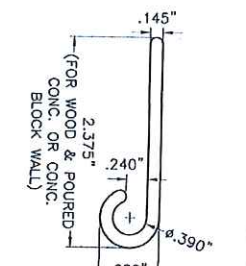




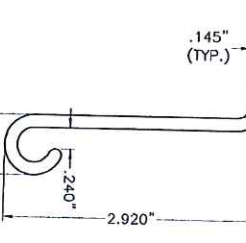
**A LOUVER BLADE**  
6063-T6 Alum. ALLOY



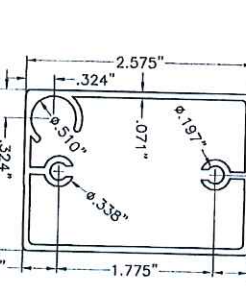
**A1 AIRFOIL OPTIONAL LOUVER BLADE TO A**  
6063-T6 Alum. ALLOY



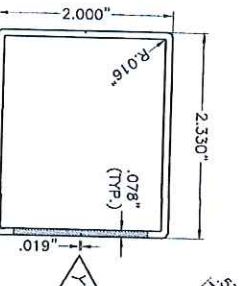
**B FLAT HINGE**  
6063-T6 Alum. ALLOY  
2" LONG.



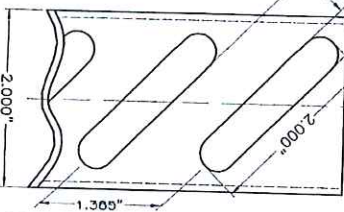
**C DOUBLE HINGE**  
6063-T6 Alum. ALLOY  
2" LONG.



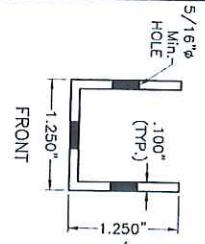
**D TOP & BOTTOM RAIL**  
6063-T6 Alum. ALLOY



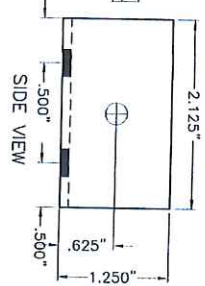
**E JAMB**



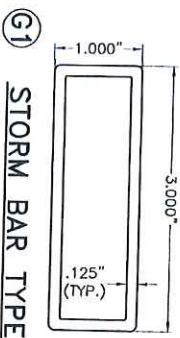
VIEW Y



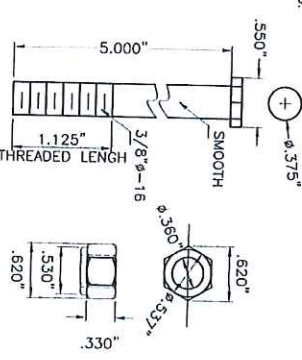
**F H.V. STORM BAR CLIP**  
6063-T6 Alum. ALLOY  
2 1/8" LONG.



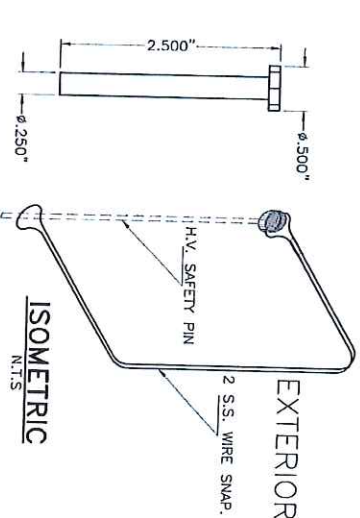
**G STORM BAR TYPE 1**



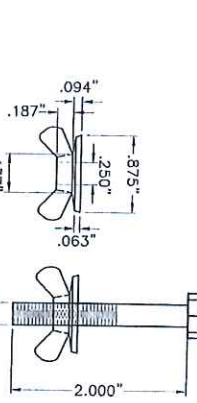
**G1 STORM BAR TYPE 2**



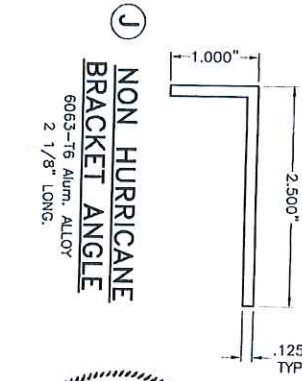
**H S.S. HINGE PIN W/ LOCK NUT.**



**I S.S. H.V. SAFETY PIN W/ 2 S.S. WIRE SNAP**



**J 1/4" Ø-20X2" S.S. HEX HEAD BOLT W/DIE CAST ZINC NICKEL PLATED WASHER WINGNUT**



**K NON HURRICANE BRACKET ANGLE**  
6063-T6 Alum. ALLOY  
2 1/8" LONG.



WALTER A. TILLET  
LICENSE  
No. 44167  
SCALE: 3/4" = 1"

COMPONENTS

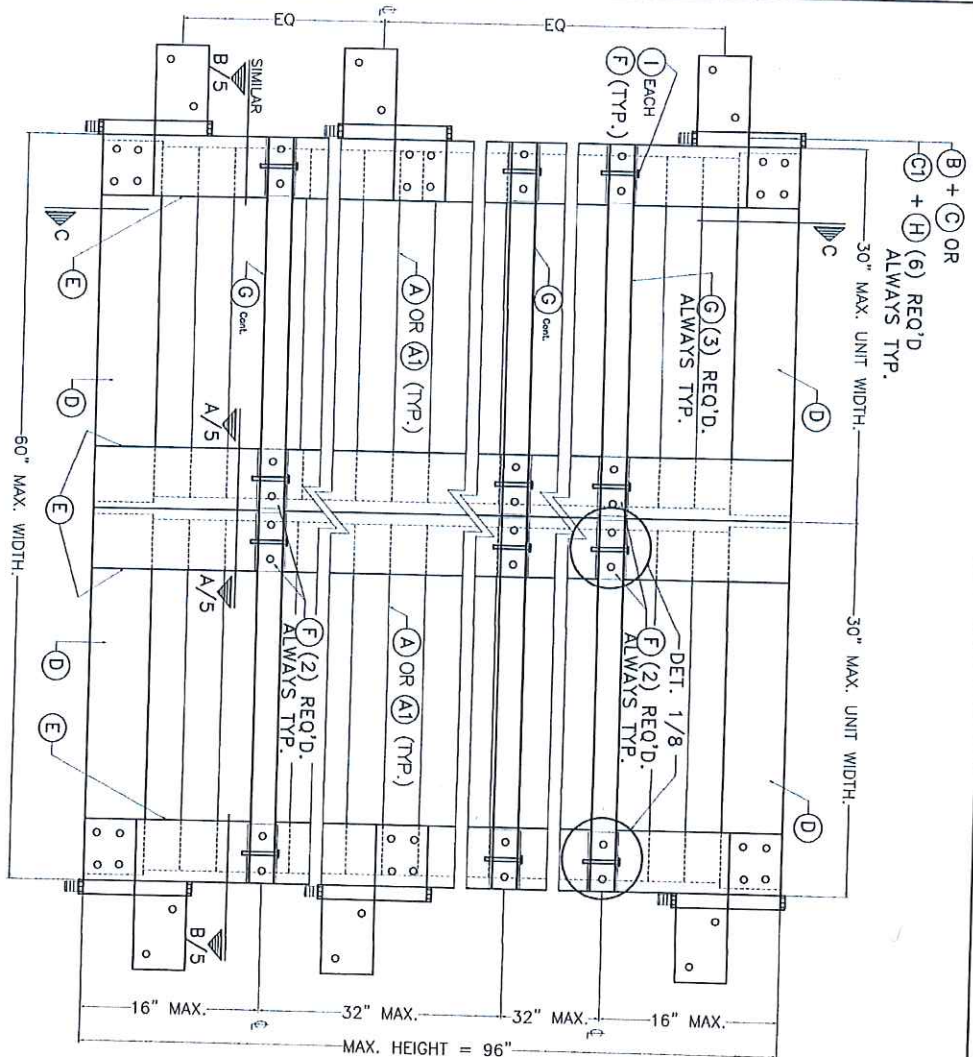
22017 TILTECO, INC.  
FLORIDA BUILDING CODE (Non High Velocity Hurricane Zone)

ASSA / BERTHA H.V. COLONIAL SHUTTER  
AMERICAN SHUTTER SYSTEMS ASSOC., INC.  
4288 WEST ROADS DRIVE  
WILMINGTON, DE 19807  
PHONE: (603)432-2294 FAX: (603)432-8380

TILTECO INC.  
TILLET TESTING & ENGINEERING CONSULTANTS  
WALTER A. TILLET, P.E.  
FLORIDA LIC. # 44167

REV.	DESCRIPTION	DATE	BY	CHK.
1	ISSUED	08/11/17		
2				

17-216  
DRAWING NO.  
SHEET 2 OF 4

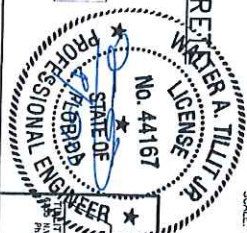


TYPICAL EXTERIOR ELEV. DOUBLE PANEL FOR WOOD OR CONCRETE TILT-UP  
(HURRICANE POSITION)

MAXIMUM A.S.D. DESIGN PRESSURE RATING = +45, -55 psf.

SECTION C-C  
(WALL MOUNT)  
HURRICANE POSITION  
SCALE: 1/4" = 1'

SECTION C-C  
(WALL MOUNT)  
HURRICANE POSITION  
SCALE: 1/4" = 1'



FLORIDA BUILDING CODE (Non High Velocity Hurricane Zone)

ASSA / BERTHA H.V. COLONIAL SHUTTER

AMERICAN SHUTTER SYSTEMS ASSOC., INC.

4298 WEST ROADS DRIVE  
WILMINGTON, DE 19804  
PHONE: (303) 432-2241 FAX: (303) 439-8380

17-216  
DRAWING NO.

09/11/17  
DATE

1  
2  
3

REVISION

DATE

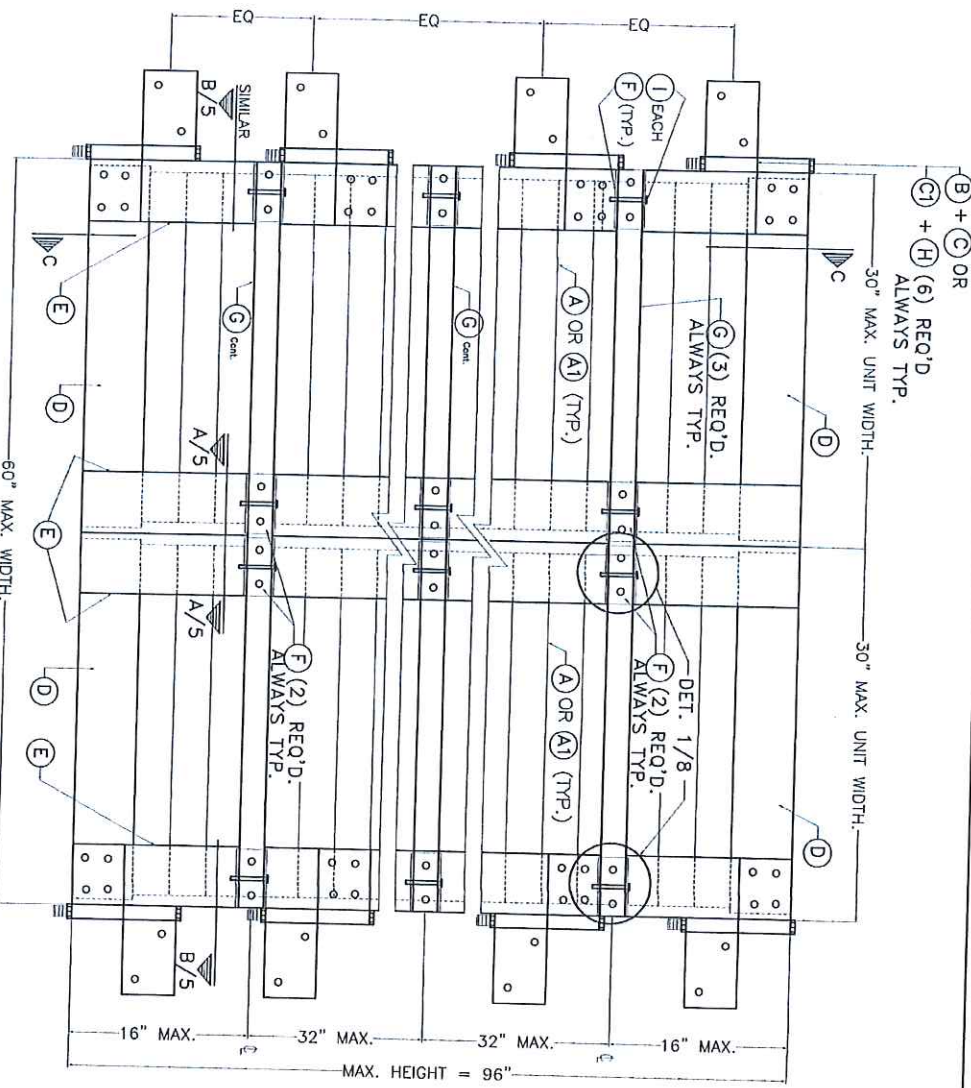
BY

DATE

BY

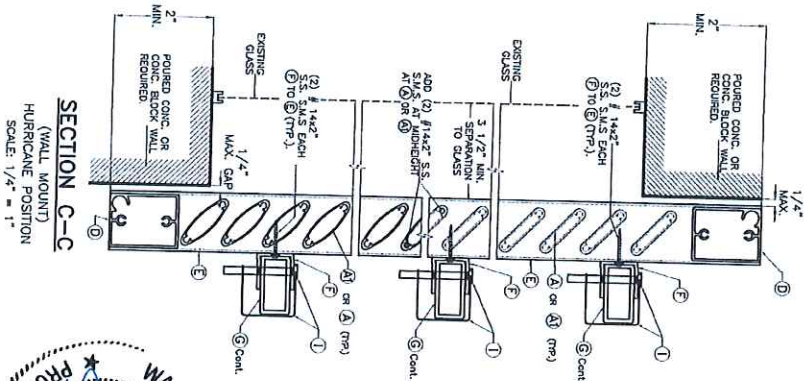
DATE



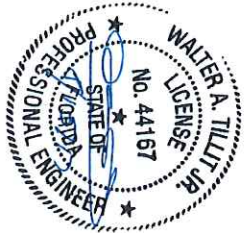


TYPICAL EXTERIOR ELEY. DOUBLE PANEL FOR CONCRETE BLOCK.  
(HURRICANE POSITION)  
N.T.S.

MAXIMUM A.S.D. DESIGN PRESSURE RATING = +45, -55 psf.



SECTION C-C  
(WALL MOUNT)  
HURRICANE POSITION  
SCALE: 1/4" = 1"



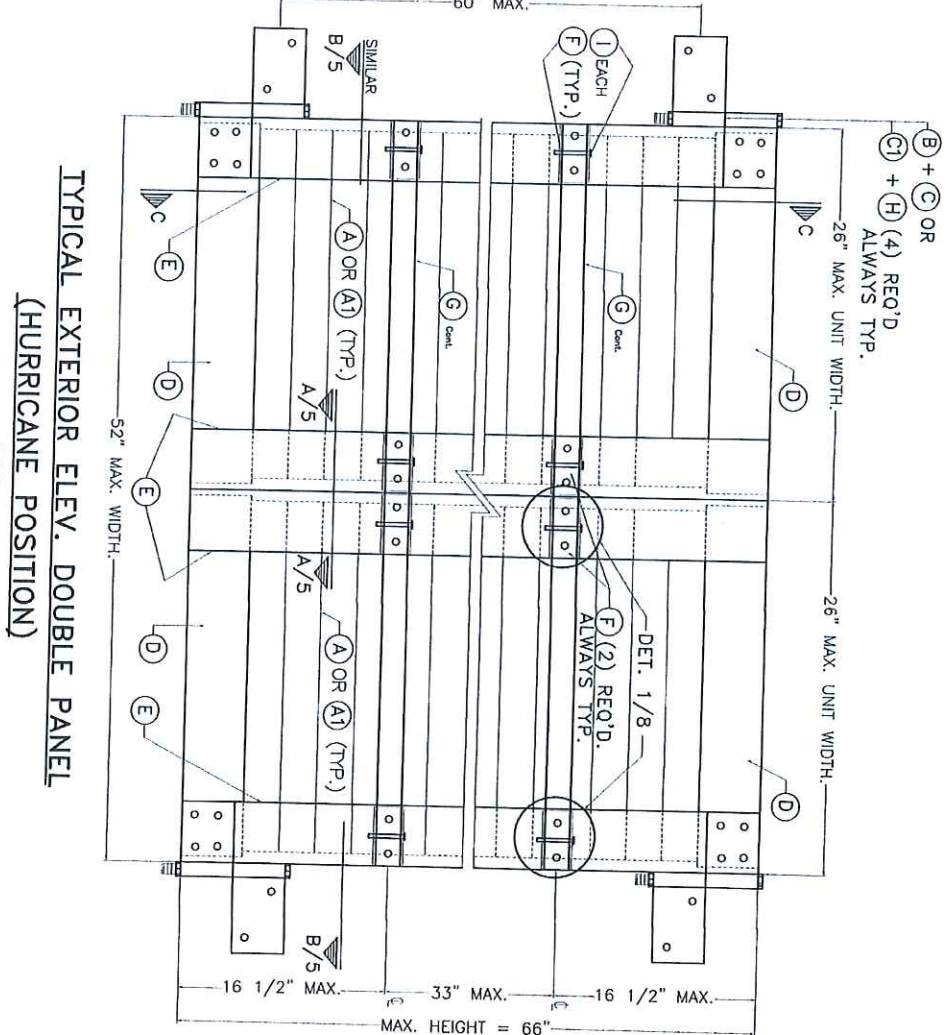
©2017 TILTECO, INC.  
**TILTECO INC.**  
TILT TESTING & ENGINEERING CO., INC.  
4325 N.W. 20th, 3rd Fl., Ft. Lauderdale, FL 33309  
Phone: (305)971-1234 Fax: (305)971-1234  
WALTER A. TILT JR. P.E.  
FLORIDA Lic. # 44167

---

FLORIDA BUILDING CODE (Non High Velocity Hurricane Zone)  
ASSA / BERTHA H.V. COLONIAL SHUTTER  
AMERICAN SHUTTER SYSTEMS ASSOC., INC.  
4268 WEST ROADS DRIVE  
WEST PALM BEACH, FL 33417  
PHONE: (800)432-2244 FAX: (561)968-4380

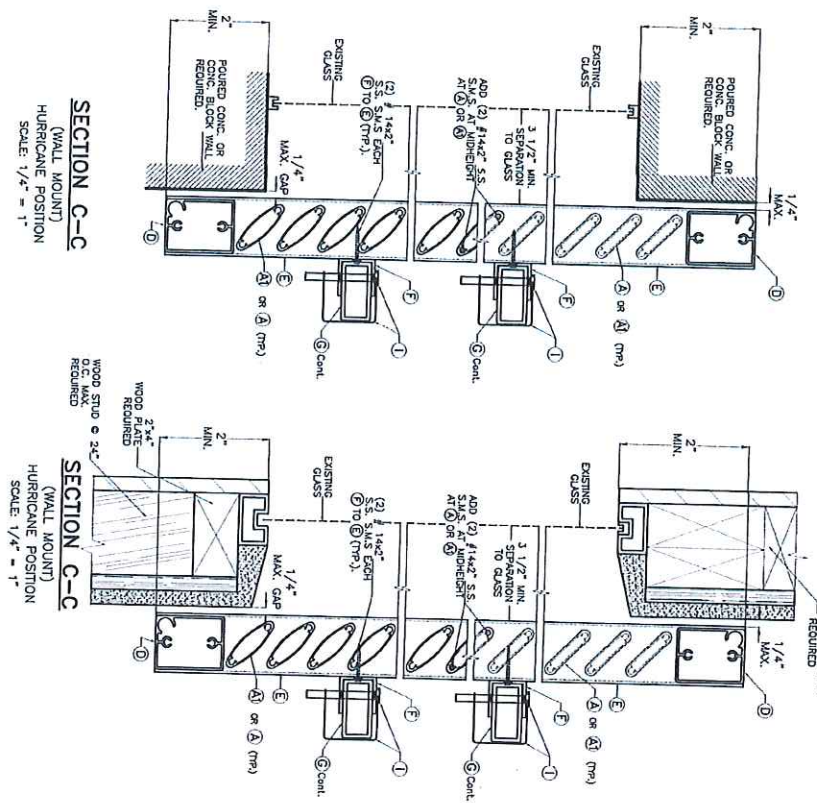
REV. NO.	DESCRIPTION	DATE	BY	CHK.
1	ISSUED	08/11/17		
2				
3				

M.L. DRAWN BY: DATE: 08/11/17  
17-216 DRAWING NO. SHEET 3A OF 14



TYPICAL EXTERIOR ELEV. DOUBLE PANEL  
(HURRICANE POSITION)

MAXIMUM A.S.D. DESIGN PRESSURE RATING = +50, -55



2017 TILTECO, INC.

**TILTECO INC.**

TILT TESTING & ENGINEERING COMPANY  
 4268 WEST ROADS DRIVE  
 WILMINGTON, DE 19804  
 PHONE: (302) 421-2200 FAX: (302) 421-1231

WALTER A. TILLITT JR., P.E.  
 FLORIDA Lic. # 44167

FLORIDA BUILDING CODE (Non High Velocity Hurricane Zone)

ASSA / BERTHA H.V. COLONIAL SHUTTER

AMERICAN SHUTTER SYSTEMS ASSOC., INC.

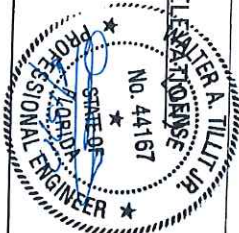
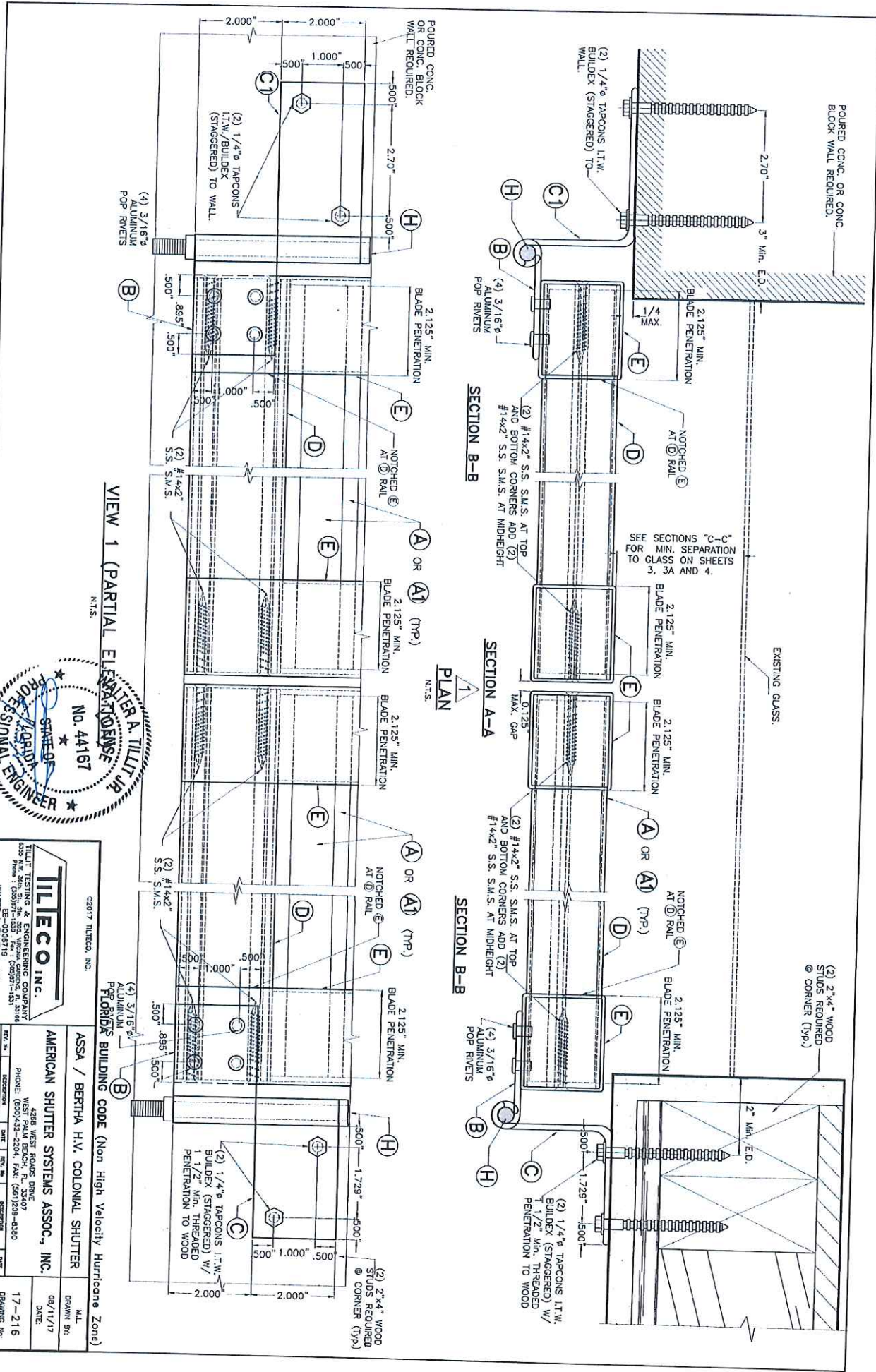
4268 WEST ROADS DRIVE  
 WILMINGTON, DE 19804  
 PHONE: (302) 421-2200 FAX: (302) 421-1231

REV. NO.	DATE	BY	CHK.	DESCRIPTION	DATE
1	08/11/17				
2	08/11/17				

17-216  
 DRAWING NO.

SHEET 4 OF 74



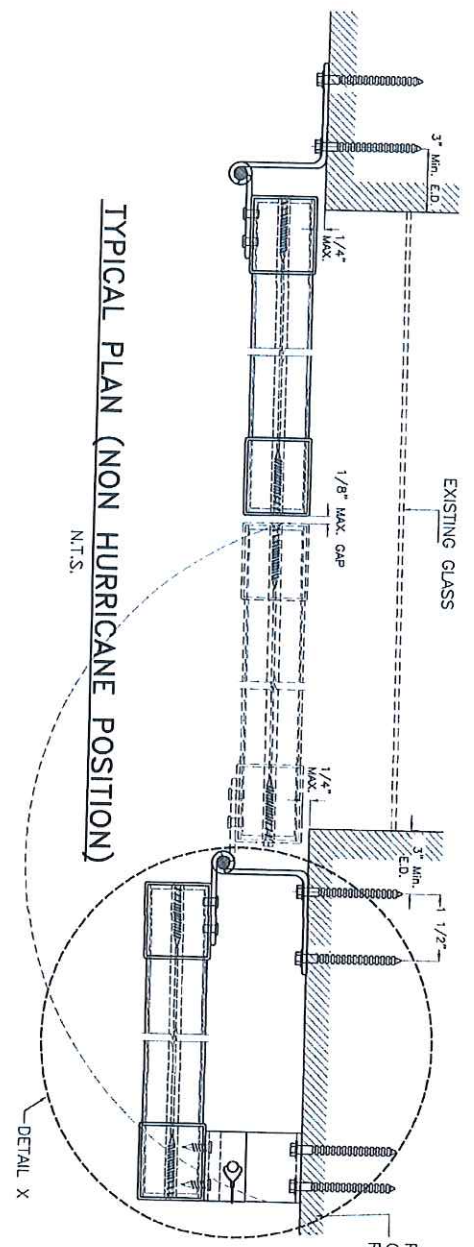


2017 TILTECO, INC.  
**TILTECO INC.**  
 TILIT TESTING & ENGINEERING COMPANY  
 4330 N.W. 20th St., Suite 200, Victoria Park, FL 32909  
 Phone: (888) 443-2204, Fax: (888) 1381-1331  
 WALTER A. TILLITT JR., P.E.  
 FLORIDA LIC. # 24167

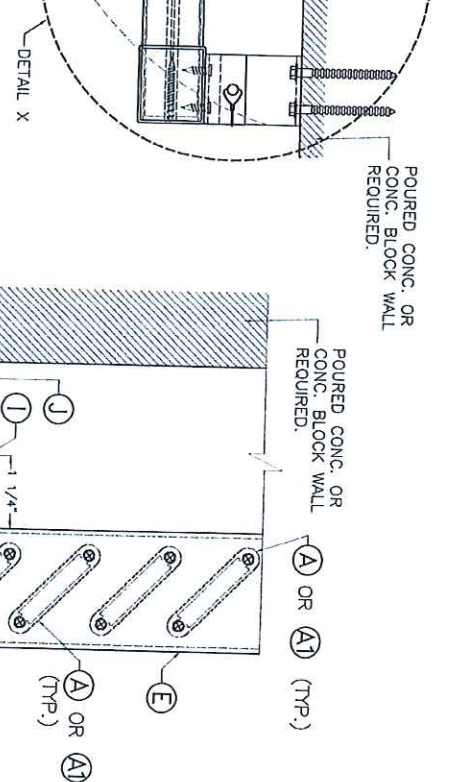
ASSA / BERTHA H.V. COLONIAL SHUTTER  
 PERIODIC BUILDING CODE (Non High Velocity Hurricane Zone)  
**AMERICAN SHUTTER SYSTEMS ASSOC., INC.**  
 4288 WEST ROADS DRIVE  
 WILMINGTON, DE 19804  
 PHONE: (609) 432-2204 FAX: (609) 432-8380  
 17-216  
 DRAWING No.  
 08/11/17  
 DATE  
 SHEET 5 OF 4

REV.	NO.	DESCRIPTION	DATE
1	1	ISSUED FOR PERMIT	07/17
2	2	REVISION	
3	3	REVISION	

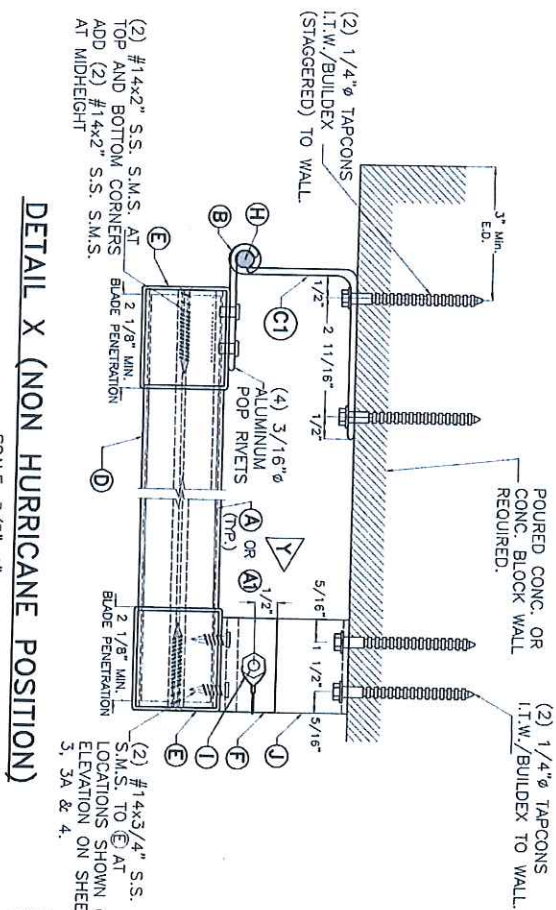




TYPICAL PLAN (NON HURRICANE POSITION)  
N.T.S.



ELEVATION Y-Y  
SCALE: 1/2"=1"



DETAIL X (NON HURRICANE POSITION)  
SCALE: 3/8"=1"

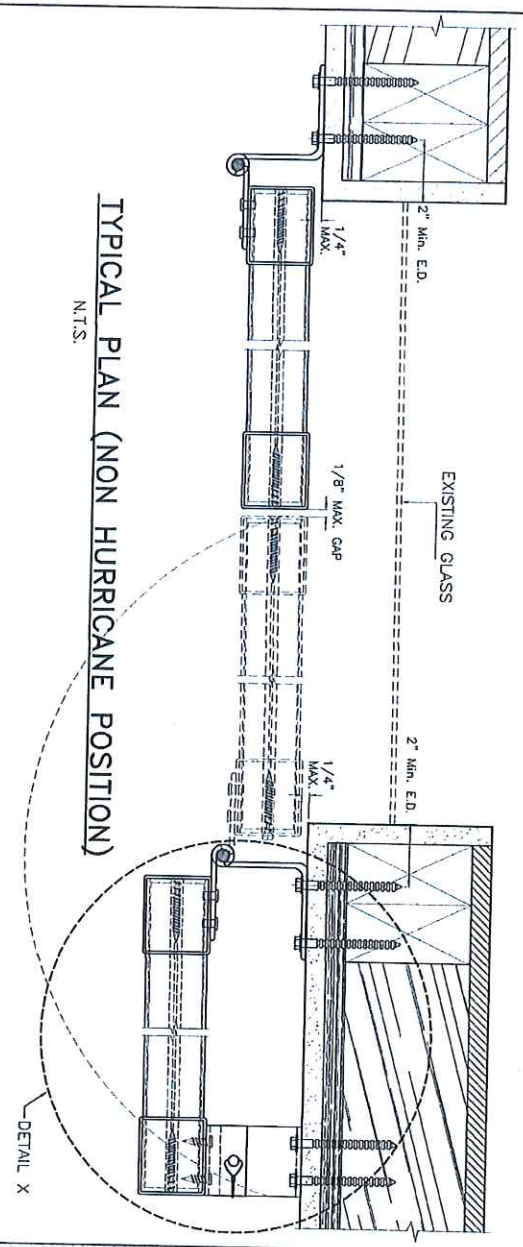


2017 TILTECO, INC.  
**TILTECO INC.**  
 TILTIT TESTING & ENGINEERING COMPANY  
 4222 N.W. 24th St., 2nd Floor, Virginia Gardens, Ft. Lauderdale, FL 33314  
 Phone: (561) 539-1333 Fax: (561) 539-1331  
 Email: info@tilteco.com  
 WALTER A. TILLITT, Jr., P.E.  
 FLORIDA LIC. # 24167

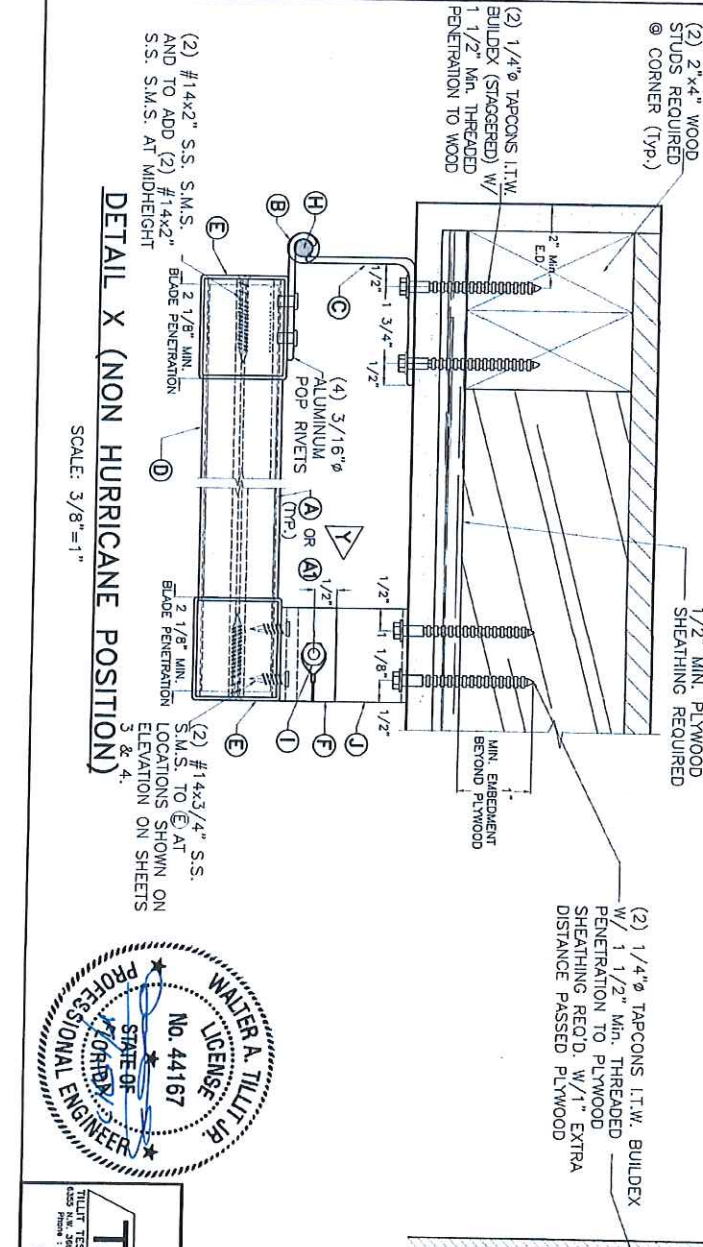
FLORIDA BUILDING CODE (Non High Velocity Hurricane Zone)  
 ASSA / BERTHA H.V. COLONIAL SHUTTER  
 M.L. DRAWN BY: 08/11/17  
 DATE: 17-216  
 DRAWING NO.:  
 SHEET 5 OF 14

REV. NO.	DESCRIPTION	DATE	REV. NO.	DESCRIPTION	DATE
1	ISSUED	08/11/17	2	REVISION	
3			4		

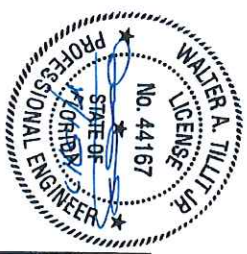
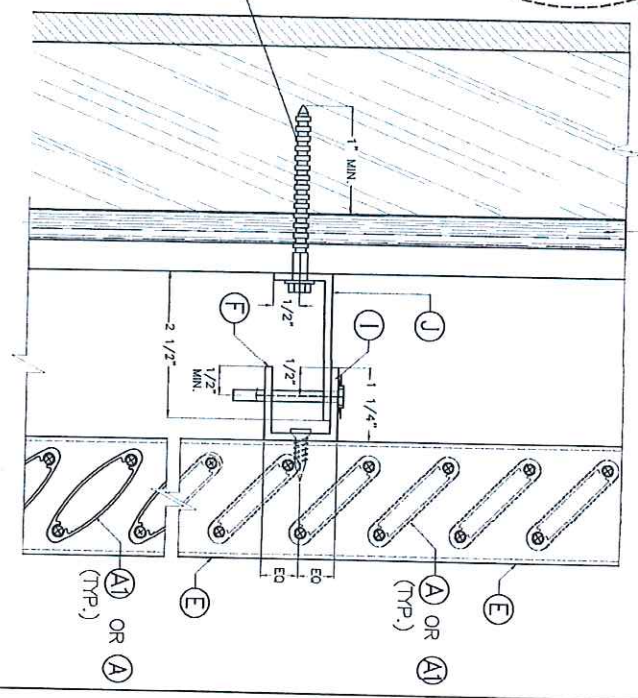
**TYPICAL PLAN (NON HURRICANE POSITION)**  
N.T.S.



**DETAIL X (NON HURRICANE POSITION)**  
SCALE: 3/8"=1"



**ELEVATION Y-Y**  
SCALE: 1/2"=1"



**TILECO INC.**  
TILIT TESTING & ENGINEERING COMPANY  
4208 WEST BOUND DRIVE  
VENICE, FL 33596  
PHONE: (800)432-2204 FAX: (661)206-6380

FLORIDA BUILDING CODE (Non High Velocity Hurricane Zone)

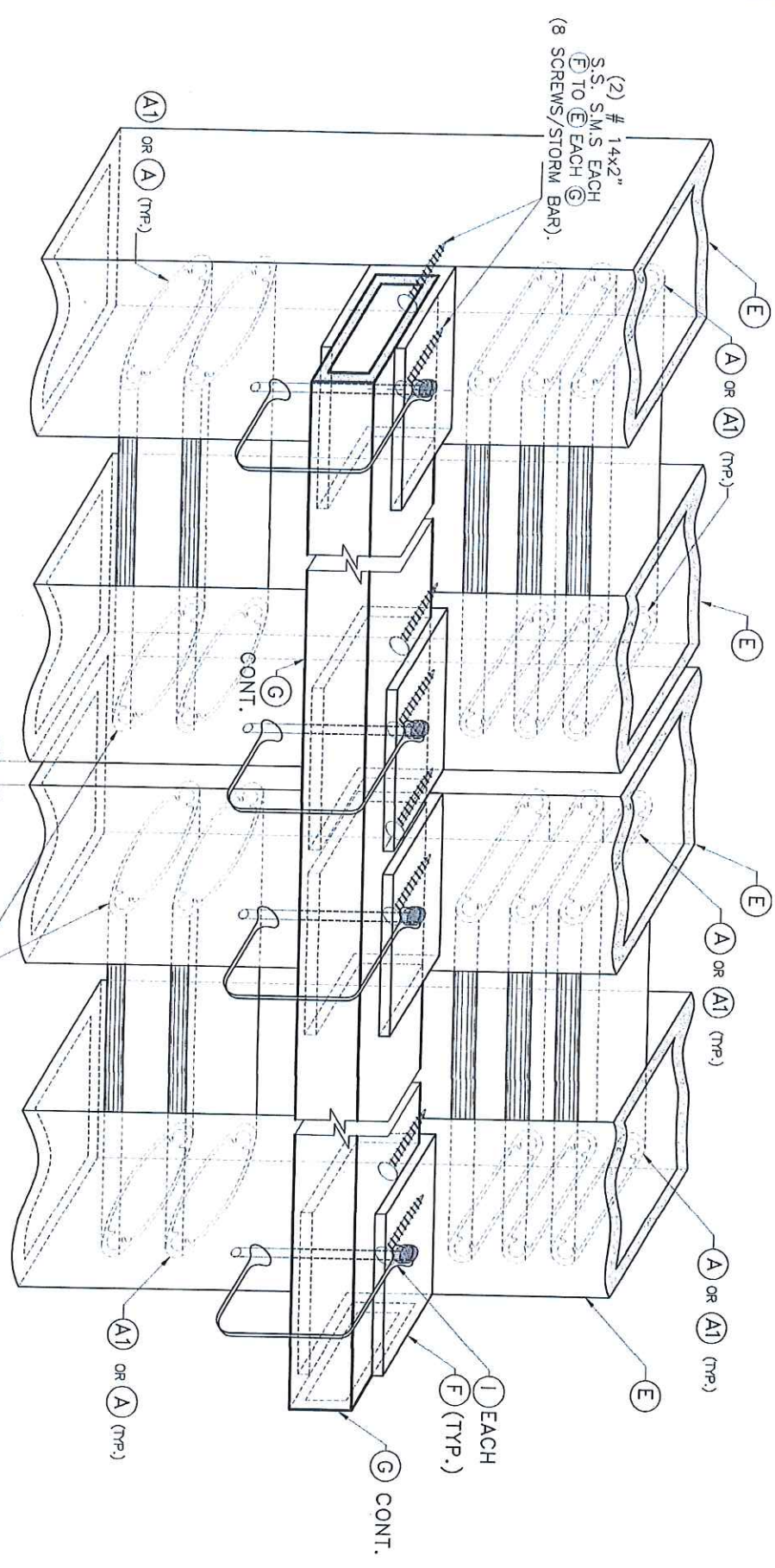
ASSA / BERTHA H.V. COLONIAL SHUTTER

AMERICAN SHUTTER SYSTEMS ASSOC., INC.

DATE: 08/11/17  
DRAWING No: 17-216  
SHEET 7 OF 14

REV. No.	DESCRIPTION	DATE	BY	CHK. BY
1	ISSUE	08/11/17	3	4





**DETAIL 1 (ISOMETRIC)**

N.T.S



FLORIDA BUILDING CODE (Non High Velocity Hurricane Zone)

**TILTECO INC.**  
 23017 TILTECO, INC.  
 2498 WEST HAVEN DRIVE  
 WEST PALM BEACH, FL 33411  
 PHONE: (561) 832-2204 FAX: (561) 928-4340

**AMERICAN SHUTTER SYSTEMS ASSOC., INC.**  
 4208 WEST HAVEN DRIVE  
 WEST PALM BEACH, FL 33411  
 PHONE: (561) 432-2204 FAX: (561) 928-4340

**WALTER A. TULLIT, P.E.**  
 FLORIDA LIC. # 44167

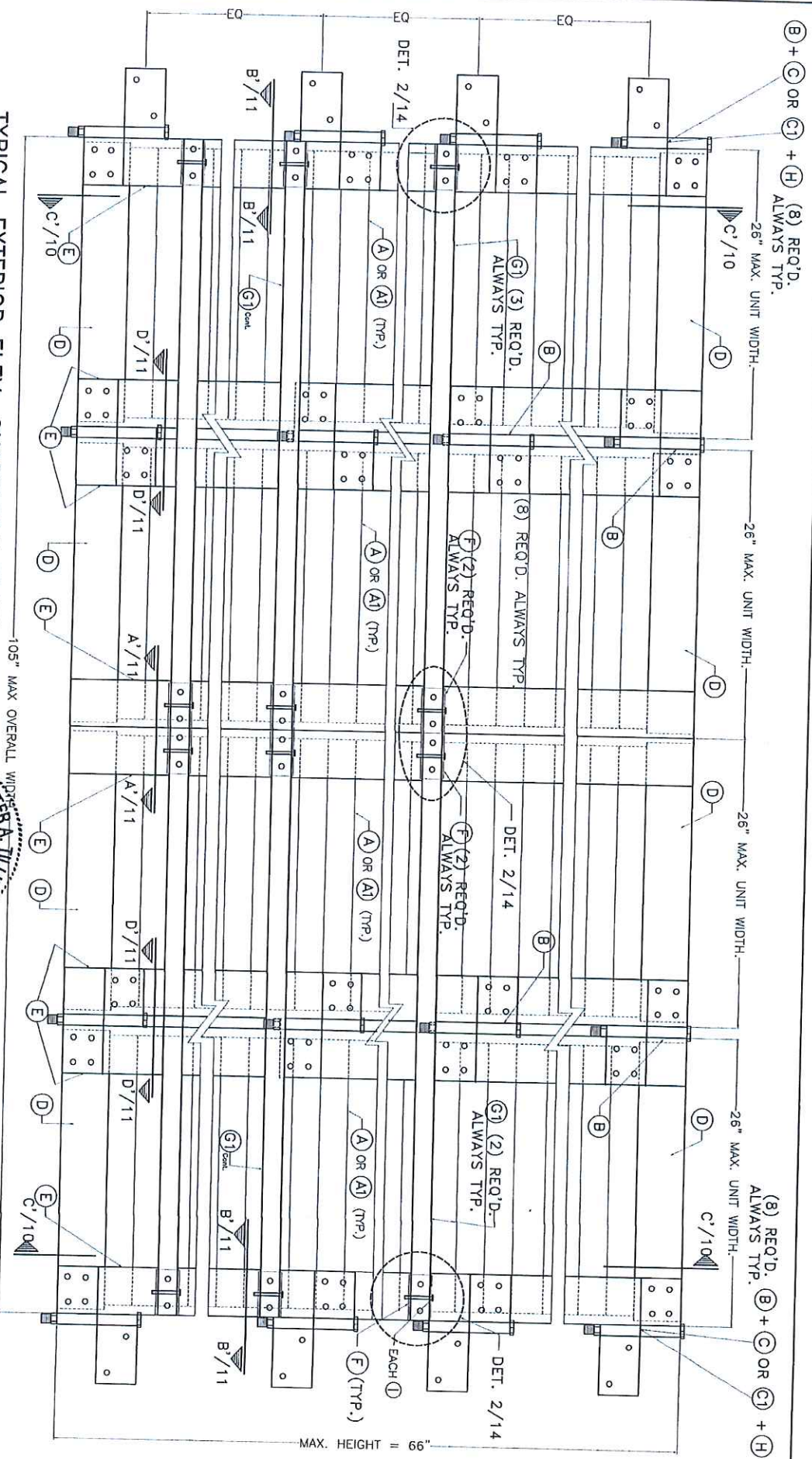
NO.	DESCRIPTION	DATE	BY	APP'D.
1	ISSUED FOR PERMIT	08/11/17		
2				
3				
4				

DRAWING No. 17-216  
 SHEET 8 OF 14

- MAXIMUM A.S.D. DESIGN PRESSURE RATING: +45, -45 PSF FOR CONCRETE OR CONCRETE BLOCK WALL.
- MAXIMUM A.S.D. DESIGN PRESSURE RATING: +40, -45 PSF FOR WOOD.

TYPICAL EXTERIOR ELEV. QUADRUPLE PANEL  
(HURRICANE POSITION)

N.T.S.



**TILTECO INC.**  
 4248 WEST FORDS DRIVE  
 WEST PALM BEACH, FL 33407  
 PHONE: (800)424-2244 FAX: (561)920-4380  
 WALTER A. TULL JR., P.E.  
 FLORIDA LIC. # 44167

FLORIDA BUILDING CODE (Non High Velocity Hurricane Zone)

ASSA / BERTHA H.V. COLONIAL SHUTTER

REV. NO.	DESCRIPTION	DATE	BY	CHK.
1	ISSUED	08/11/17		
2				

AMERICAN SHUTTER SYSTEMS ASSOC., INC.  
 4248 WEST FORDS DRIVE  
 WEST PALM BEACH, FL 33407  
 PHONE: (800)424-2244 FAX: (561)920-4380

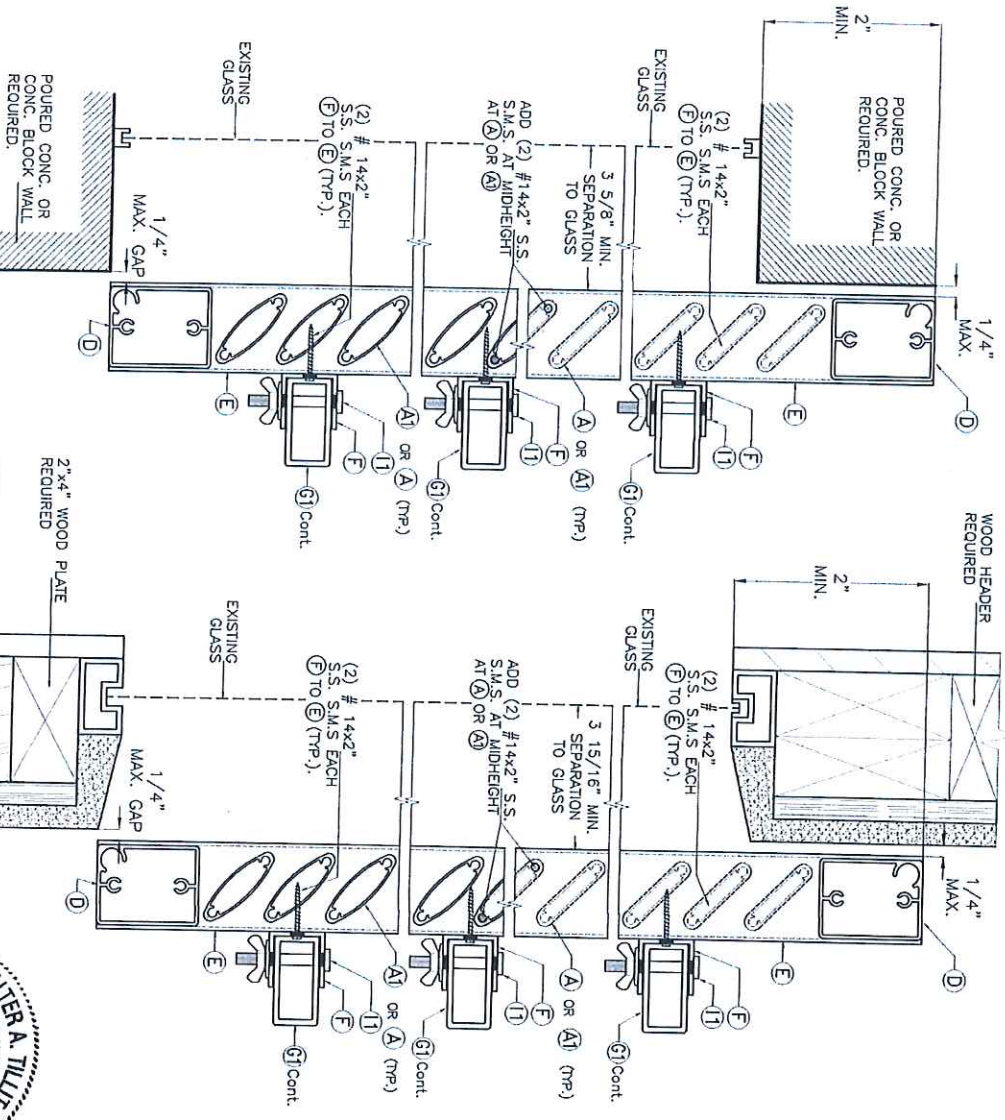
17-216  
 DRAWING NO.  
 SHEET 9 OF 14

MAX. HEIGHT = 66"



**SECTION C-C**  
(WALL MOUNT)  
HURRICANE POSITION  
SCALE: 1/4" = 1"

**SECTION C-C**  
(WALL MOUNT)  
HURRICANE POSITION  
SCALE: 1/4" = 1"



2017 TILTECO, INC.

**TILTECO INC.**  
TILIT TESTING & ENGINEERING COMPANY  
1100 N.W. 20th St., Suite 200, Fort Lauderdale, FL 33304  
Phone: (954) 432-2504 Fax: (954) 432-2504  
WALTER A. TILLITT, Jr., P.E.  
FLORIDA LIC. # 44167

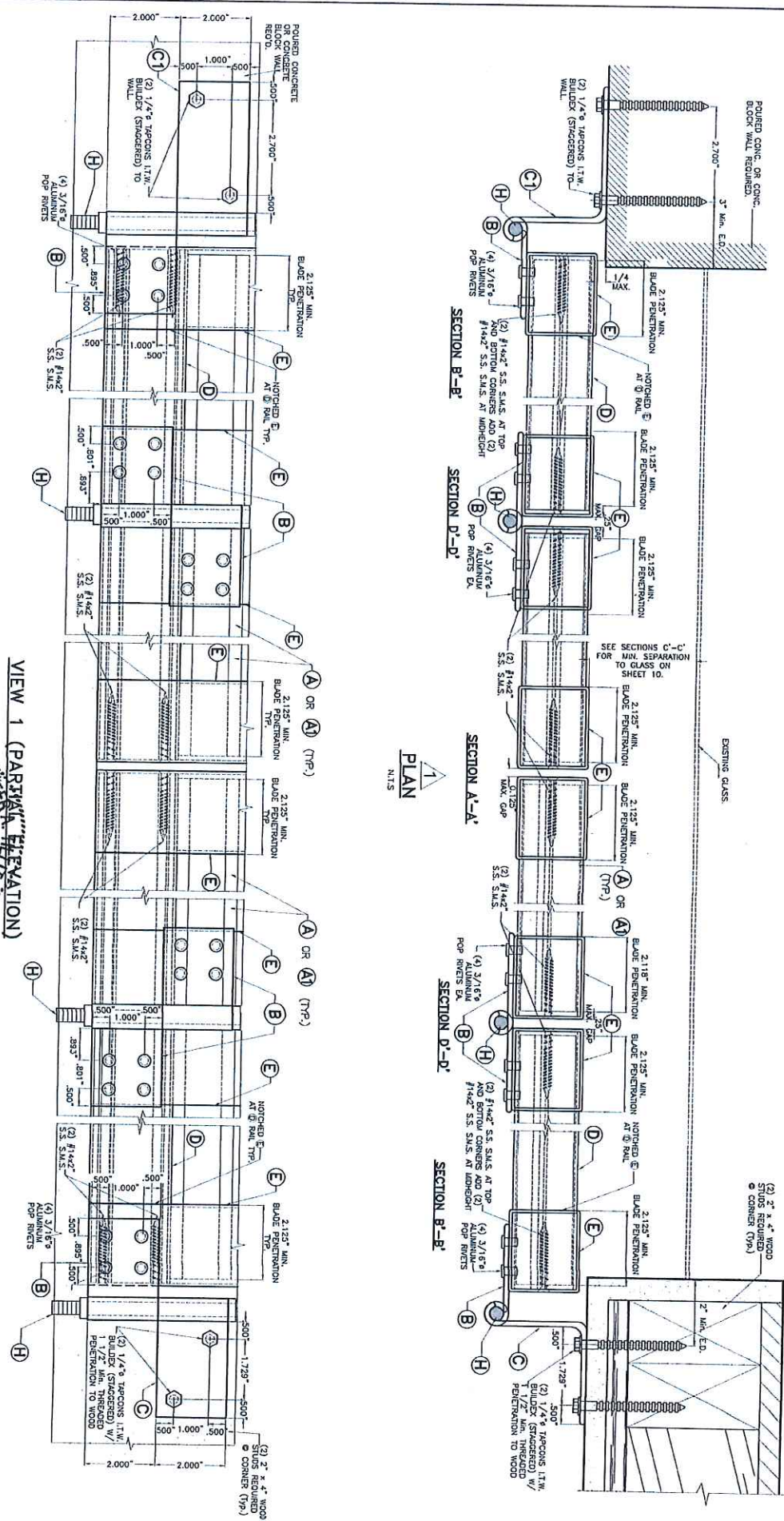
**FLORIDA BUILDING CODE (Non High Velocity Hurricane Zone)**

ASSA / BERTHA H.V. COLONIAL SHUTTER

**AMERICAN SHUTTER SYSTEMS ASSOC., INC.**  
428 WEST HOUSE DRIVE  
WEST PALM BEACH, FL 33411  
PHONE: (561) 432-2504 FAX: (561) 432-2504

REV.	DESCRIPTION	DATE	BY	CHKD.
1	ISSUED	08/11/17		
2				

M.L.  
DRAWN BY: 08/11/17  
DATE: 17-216  
DRAWING NO.  
SHEET 10 OF 14



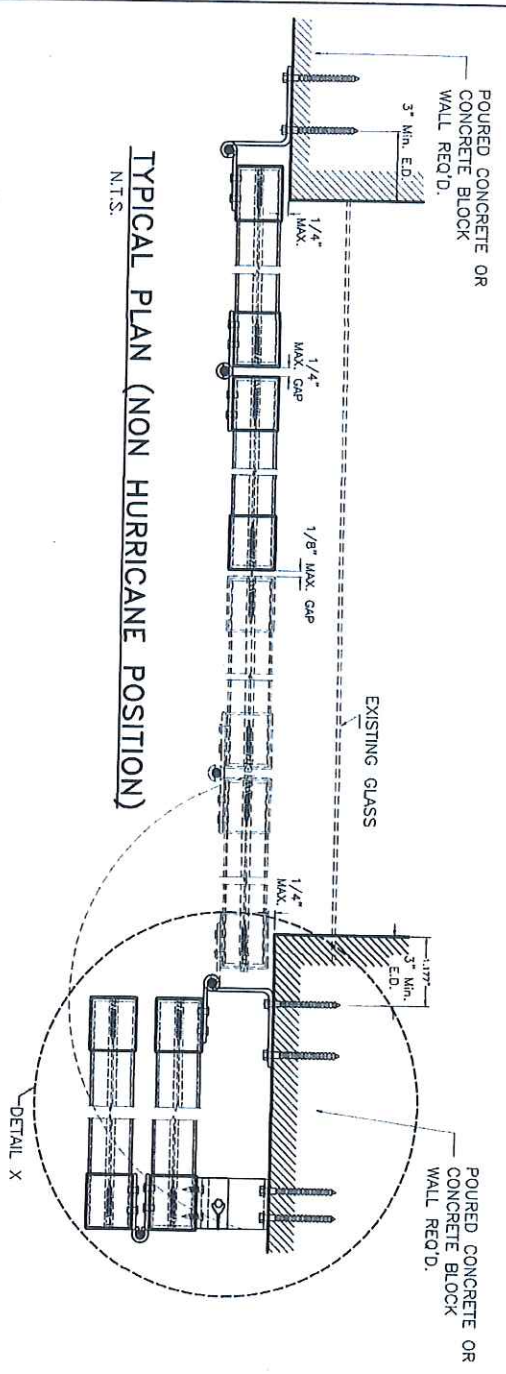
©2017 TILTECO, INC.  
 TILTECO INC.  
 TILIT TESTING & ENGINEERING COMPANY  
 4325 N.W. 25th St., Suite 200, Virginia Gardens, Ft. Lauderdale, FL 33309  
 Phone: (954) 359-1131, Fax: (954) 359-1131  
 TILIT, Inc. P.E.  
 Walter A. Tullit, P.E.  
 Florida, Inc. # 44167

FLORIDA BUILDING CODE (Non High Velocity Hurricane Zone)  
 ASSA / BERTHA H.V. COLONIAL SHUTTER  
 AMERICAN SHUTTER SYSTEMS ASSOC., INC.  
 1485 WEST HEDGE DRIVE  
 WEST PALM BEACH, FLORIDA 33411  
 PHONE: (800) 432-2204, FAX: (561) 209-8390

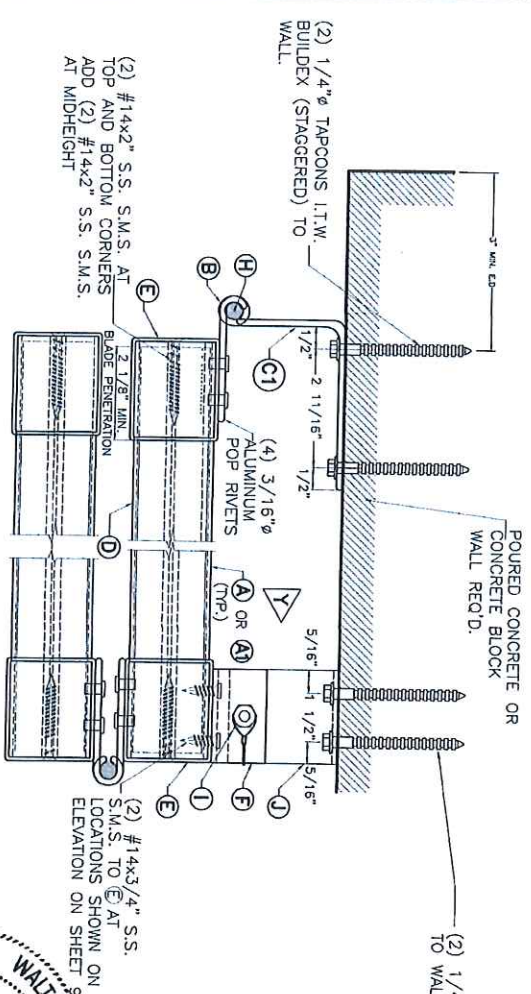
REV. NO.	DESCRIPTION	DATE	REV. NO.	DESCRIPTION	DATE
1	QD 15-000	02/17/17	3		
2			4		

M.L. DRAWN BY: 04/11/17  
 DATE: 17-216  
 DRAWING NO.:  
 SHEET 11 OF 14

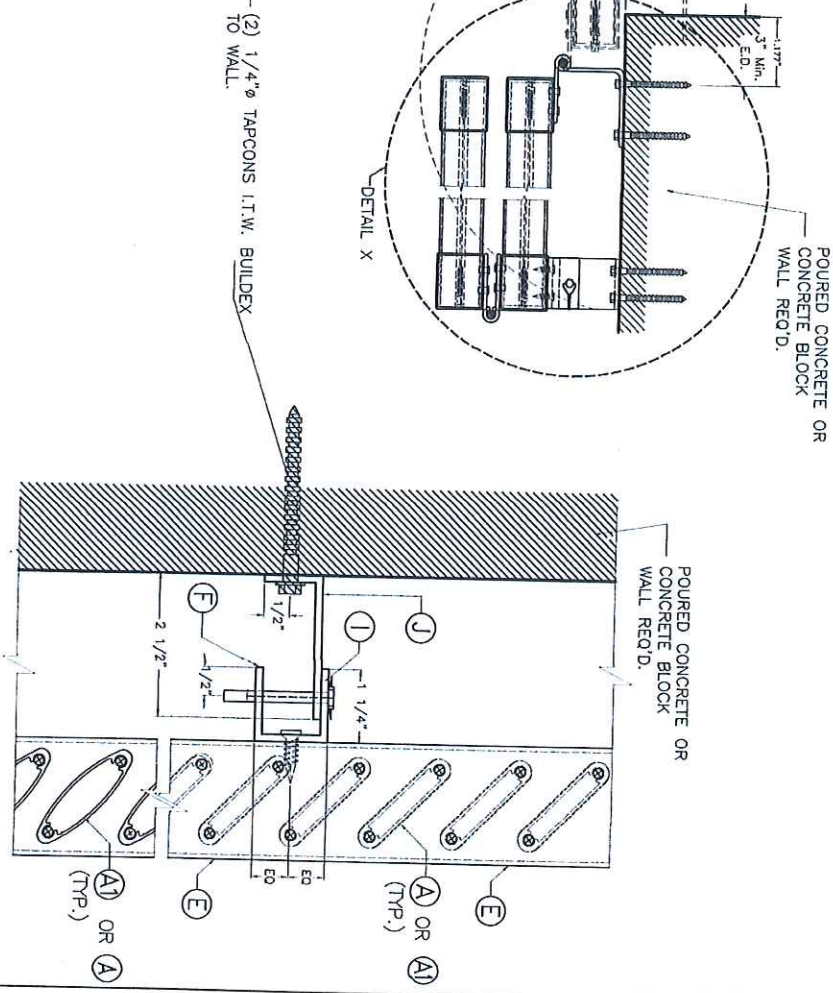




TYPICAL PLAN (NON HURRICANE POSITION)  
N.T.S.



DETAIL X (NON HURRICANE POSITION)  
SCALE: 3/8"=1"



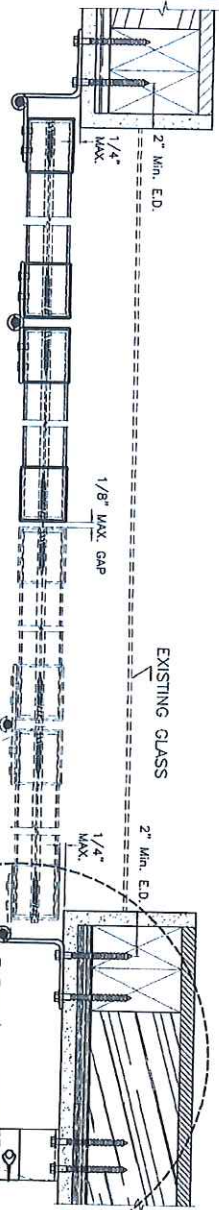
ELEVATION Y-Y  
SCALE: 1/2"=1"



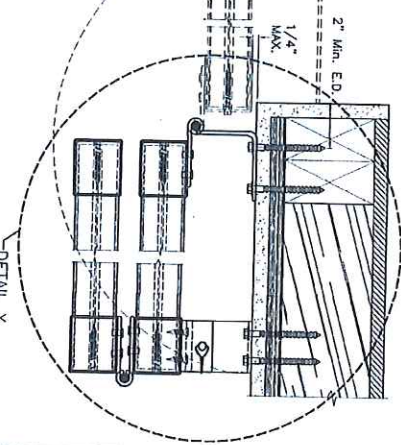
©2017 TILTECO, INC.  
**TILTECO INC.**  
 TILT TESTING & ENGINEERING COMPANY  
 4298 WEST ROUNDS DRIVE  
 WEST PALM BEACH, FLORIDA 33411  
 PHONE: (561) 432-4204 FAX: (561) 209-8390  
 WWW.TILTECO.COM  
 WALTER A. TILT, P.E.  
 FLORIDA LIC. # 44167

FLORIDA BUILDING CODE (Non High Velocity Hurricane Zone)

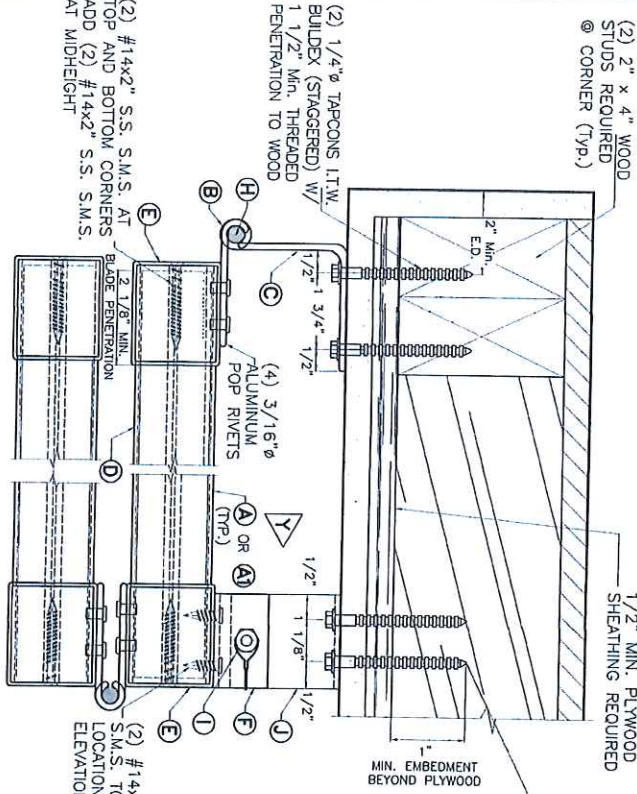
ASSA / BERTHA H.V. COLONIAL SHUTTER	W.A.
AMERICAN SHUTTER SYSTEMS ASSOC., INC.	DRAWN BY:
	DATE:
	17-216
	DRAWING NO:
	SHEET 12 OF 14



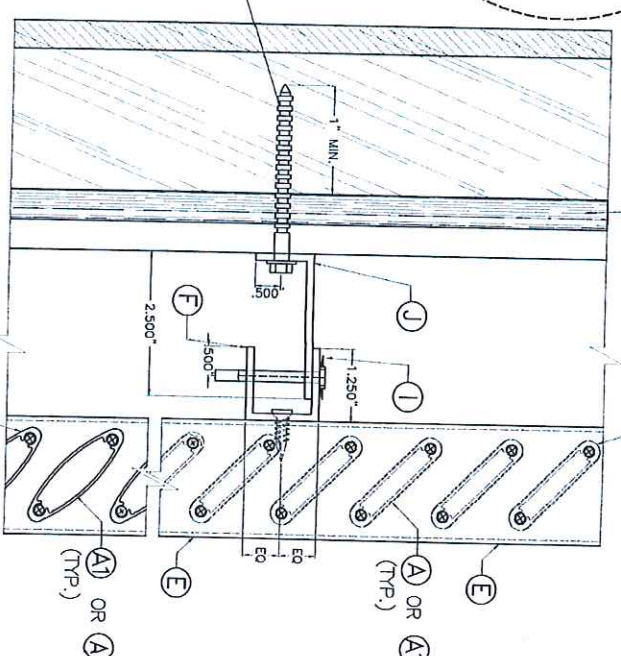
TYPICAL PLAN (NON HURRICANE POSITION)  
N.T.S.



DETAIL X



ELEVATION Y-Y  
SCALE: 1/2" = 1"



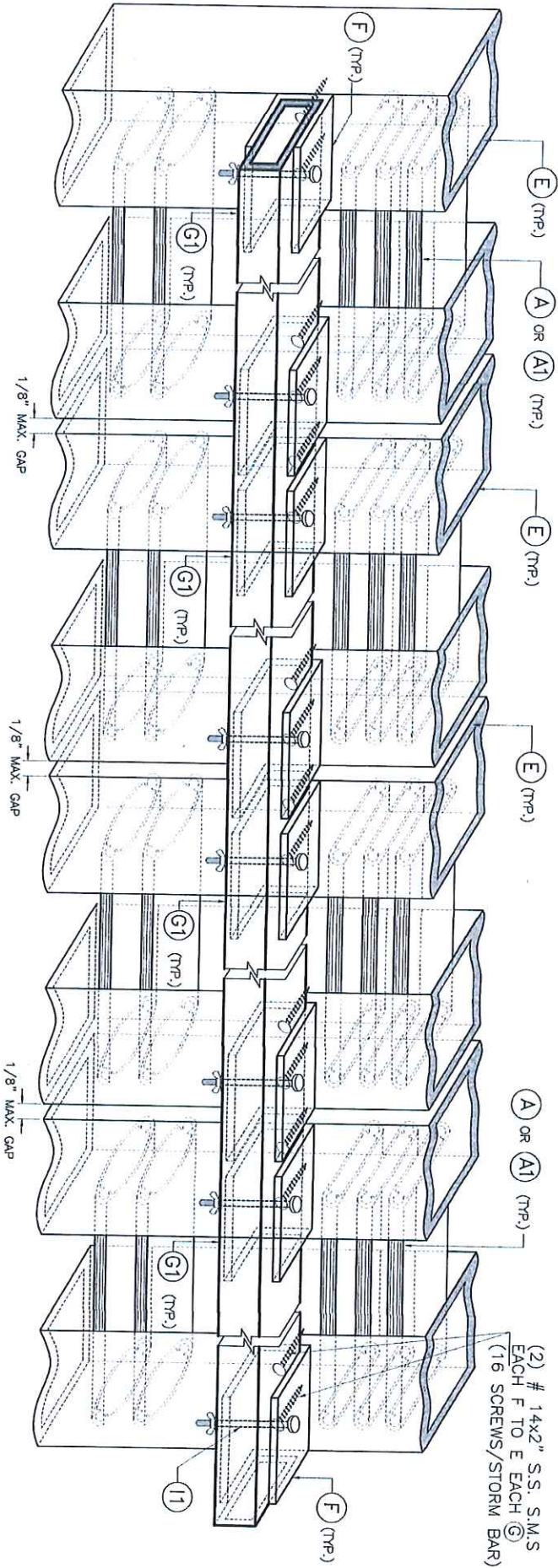
DETAIL X (NON HURRICANE POSITION)  
SCALE: 3/8" = 1"



TILTECO INC.  
TILTIT TESTING & ENGINEERING COMPANY  
4208 WEST ROCKS DRIVE  
KISSIMISSI, FLORIDA 34741  
PHONE: (800) 432-2024 FAX: (817) 289-4300  
WALTER A. TILTIT, JR., P.E.  
FLORIDA LIC. # 44167

FLORIDA BUILDING CODE (Non High Velocity Hurricane Zone)		ASSA / BERTHA H.V. COLONIAL SHUTTER		M.L.	
AMERICAN SHUTTER SYSTEMS ASSOC., INC.		4208 WEST ROCKS DRIVE KISSIMISSI, FLORIDA 34741		DRAWN BY:	
PHONE: (800) 432-2024 FAX: (817) 289-4300		REVISIONS		DATE:	
REV. NO.	DESCRIPTION	DATE	BY	DATE	BY
1					
2					
DRAWING NO.: 17-216				DATE: 08/11/17	
SHEET 13 OF 14					





(2) # 14x2" S.S. S.M.S  
EACH F TO E EACH (G)  
(16 SCREWS/STORM BAR)

# DETAIL 1 (ISOMETRIC)

N.T.S



©2017 TILTECO, INC.  
**TILTECO INC.**  
 TILIT TESTING & ENGINEERING COMPANY  
 4333 N.W. 25th St., Ste. 305, Miramar, FL 33186  
 Phone: (305) 871-1311 Fax: (305) 871-1311  
 Email: info@tilteco.com  
 Walter A. Tillitt Jr., P.E.  
 License No. 44167

FLORIDA BUILDING CODE (Non High Velocity Hurricane Zone)

ASSA / BERTHA H.V. COLONIAL SHUTTER	M.L.	
AMERICAN SHUTTER SYSTEMS ASSOC., INC.	DRWN: BR	
4988 WEST GARDEN DRIVE WEST PALM BEACH, FL 33407	DATE: 09/11/17	
PHONE: (800)432-2204, FAX: (561)299-8390	DATE: 17-216	
REV. NO. 1	DESCRIPTION	DATE
2		

SHEET 14 OF 14